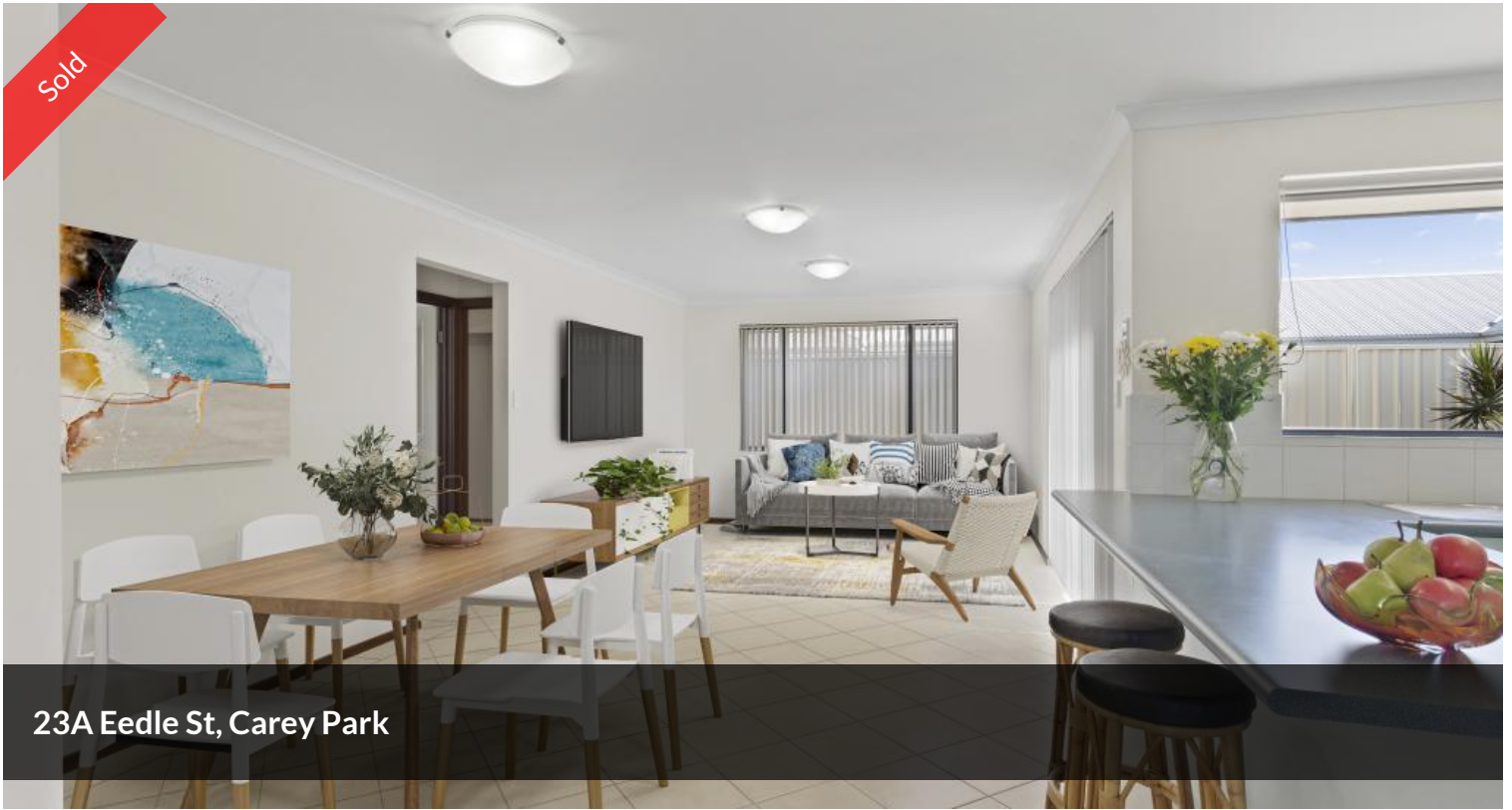


Sold



23A Eedle St, Carey Park



## STREET FRONT, STAND-ALONE MODERN 3 X 2 WITH A DOUBLE REMOTE GARAGE.

Perfectly priced at just Offers Over \$289 000.

This property has so much potential- Nest-Invest-Downsize, this property ticks all of these boxes. This easy-care low maintenance property would be ideal for a young couple starting out, a great option to add to your investment portfolio or retirees wanting an easier lifestyle, or renters who are wanting to get out of the rental market.

Perfectly located on a very quiet street and central to shopping, schools and transport.

This unit is light and bright with an open plan kitchen/dining and living area. It offers an East/West orientation and a stunning north facing courtyard that captures the sun.

This property has no strata fees, no common driveways, it is just like a house on a small block.

 3  2  2  271 m<sup>2</sup>

Price	SOLD
Property Type	Residential
Property ID	572
Land Area	271 m <sup>2</sup>

### AGENT DETAILS

Celestine Pfuhl - 0435 824 123

### OFFICE DETAILS

Umbrella Realty  
1/98 Stirling Street East Bunbury  
WA 6230 Australia  
(08) 9779 9990



**Call me today to arrange a private viewing Melanie 0417 927 361**

Umbrella Realty would like to state that no representation or warranties of any nature within this advertisement are given, intended, or implied. Any interested parties should rely on their own inquiries. Note that this listing has virtual furniture. Images of furniture are for illustration purposes only.

The above information provided has been furnished to us by the vendor/s. We have not verified whether or not that information is accurate and do not have any belief in one way or the other in its accuracy. We do not accept any responsibility to any person for its accuracy and do no more than pass it on. All interested parties should make and rely upon their own inquiries in order to determine whether or not this information is in fact accurate.