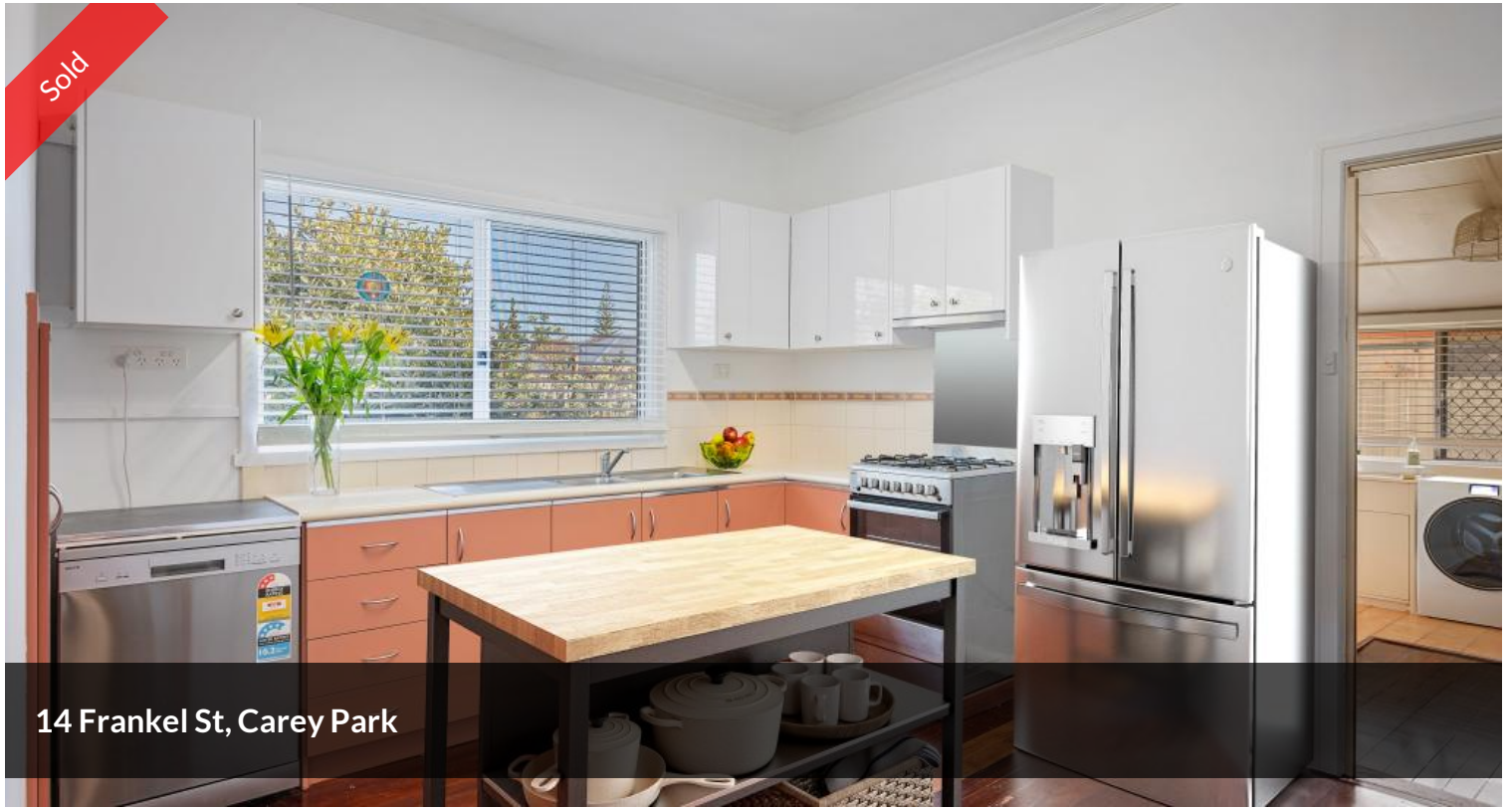


Sold



14 Frankel St, Carey Park



## COSY COTTAGE WITH CHARACTER & CHARM

Step inside this charming 3 x 1 cottage and you will be welcomed by warm polished jarrah floorboards, spacious light, bright rooms that are on trend with new window treatments through-out. The kitchen and bathroom have recently had a make-over. The added bonus of this property is the additional room, it is up to you how you use it - an office or a dining room even an extra living space or bedroom- take your pick. This stunning property offers a North facing undercover outdoor entertaining area perfect for all year round entertaining. Plus, the block offers the perfect space to plant your own garden even space for a veggie patch and room for your furry friend.

The added features you will love about this property are-

Reverse cycle air-conditioning and gas bayonet.

Dish washer

Fully enclosed yard

Undercover parking

🛏 3 📶 1 🚗 1 🏠 487 m<sup>2</sup>

Price	SOLD
Property Type	Residential
Property ID	751
Land Area	487 m <sup>2</sup>
Floor Area	112 m <sup>2</sup>

### AGENT DETAILS

Celestine Pfuhl - 0435 824 123

### OFFICE DETAILS

Umbrella Realty  
1/98 Stirling Street East Bunbury  
WA 6230 Australia  
(08) 9779 9990



Reticulated gardens and lawn plus a garden shed.

**If you love character and are looking to move into your own home,  
please call me today to arrange a viewing**

**Melanie 0417927361**

Umbrella Realty would like to state that no representation or warranties of any nature within this advertisement are given, intended, or implied. Any interested parties should rely on their own inquiries. Note that this listing has virtual furniture. Images of furniture are for illustration purposes only

The above information provided has been furnished to us by the vendor/s. We have not verified whether or not that information is accurate and do not have any belief in one way or the other in its accuracy. We do not accept any responsibility to any person for its accuracy and do no more than pass it on. All interested parties should make and rely upon their own inquiries in order to determine whether or not this information is in fact accurate.