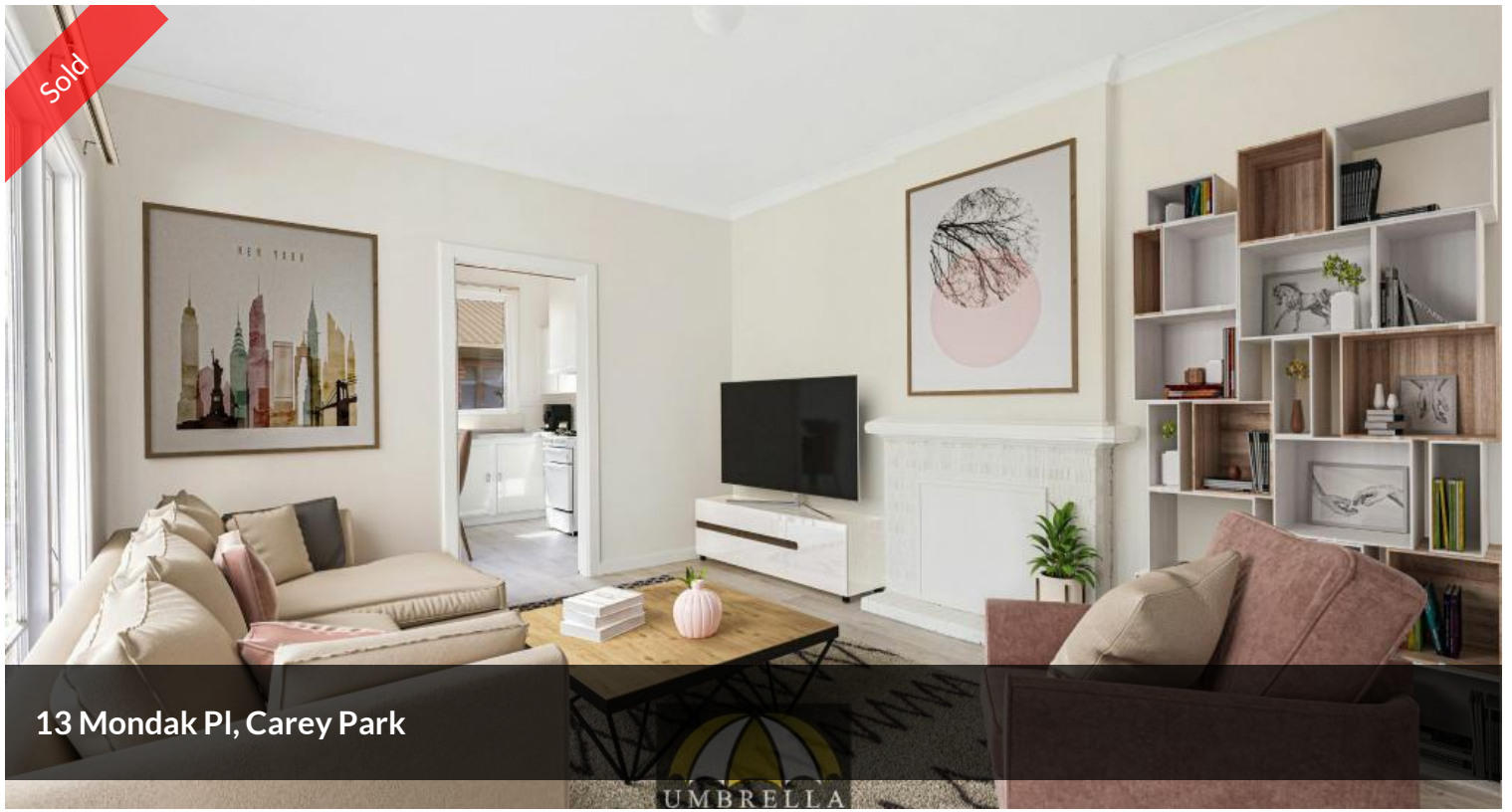


Sold



13 Mondak Pl, Carey Park

UMBRELLA



## LIGHT BRIGHT HOME - PERFECT AS YOUR FIRST HOME, INVESTORS OR DEVELOPERS

This gorgeous home offers convenient living, located in the heart of Carey Park, with the convenience of the IGA across the road - never worry about forgetting to pick up milk ever again!

The home is freshly painted throughout and has new flooring throughout - it is move in ready and offers a light bright lounge area with large window. Combined kitchen/ dining area with gas cooktop and oven.

The master bedroom is large and offers a reverse cycle split system and all bedrooms have brand new carpet. The bathroom is neat and this home offers two toilets. There is a patio perfect for BBQ's and a fully fenced yard. There is also a large lock-up shed.

The home is located on a large 744sqm block and is zoned R20/R40 meaning you would have the ability to built another property at the rear (SBTC).

This property will not last long so enquire today by calling Celestine on

🛏 3 📶 1 🚗 1 📏 745 m<sup>2</sup>

Price	SOLD
Property Type	Residential
Property ID	905
Land Area	745 m <sup>2</sup>

### AGENT DETAILS

Celestine Pfuhl - 0435 824 123

### OFFICE DETAILS

Umbrella Realty  
1/98 Stirling Street East Bunbury  
WA 6230 Australia  
(08) 9779 9990



0435 824 123.

Council Rates Per Annum Approximately \$1,859.60

Water Rates Per Annum Approximately \$1,109.60

Umbrella Realty would like to state that no representation or warranties of any nature within this advertisement are given, intended, or implied. Any interested parties should rely on their own inquiries. Note that this listing has virtual furniture. Images of furniture are for illustration purposes only.

The above information provided has been furnished to us by the vendor/s. We have not verified whether or not that information is accurate and do not have any belief in one way or the other in its accuracy. We do not accept any responsibility to any person for its accuracy and do no more than pass it on. All interested parties should make and rely upon their own inquiries in order to determine whether or not this information is in fact accurate.