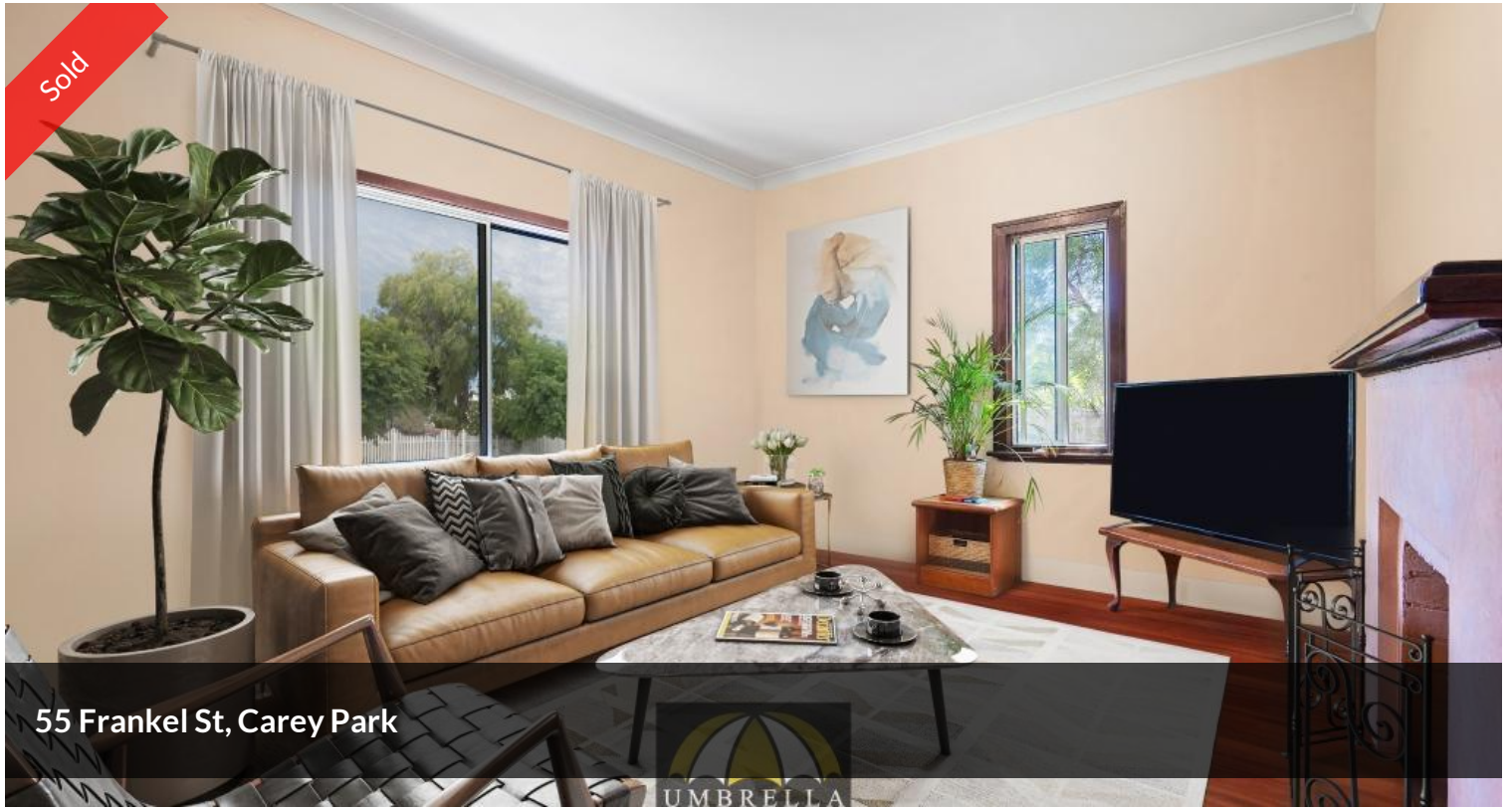


Sold



55 Frankel St, Carey Park

UMBRELLA



DEVELOPERS / INVESTORS THIS ONES FOR YOU!

What an opportunity this home offers. This large 1016sqm block is zoned Mixed Use Residential and R50. This means there are a few options - you can develop as a commercial space or you have the potential to subdivide and build 5 properties (subject to council approval).

The home is a classic 1954 build and offers high ceilings, classic jarrah floors and large rooms. The kitchen is a classic cottage style. There is an additional room at the rear that can be used as an additional room or sunroom.

Located walking distance to shops, schools and parks you will never need to drive again.

Contact Celestine today to arrange a viewing on 0435 824 123.

Umbrella Realty would like to state that no representation or warranties of any nature within this advertisement are given, intended, or implied. Any interested parties should rely on their own inquiries.

🛏 2 📶 1 🚗 2 📏 1,016 m²

Price	SOLD
Property Type	Residential
Property ID	906
Land Area	1,016 m ²

AGENT DETAILS

Celestine Pfuhl - 0435 824 123

OFFICE DETAILS

Umbrella Realty
1/98 Stirling Street East Bunbury
WA 6230 Australia
(08) 9779 9990



Note that this listing has virtual furniture. Images of furniture are for illustration purposes only.

The above information provided has been furnished to us by the vendor/s. We have not verified whether or not that information is accurate and do not have any belief in one way or the other in its accuracy. We do not accept any responsibility to any person for its accuracy and do no more than pass it on. All interested parties should make and rely upon their own inquiries in order to determine whether or not this information is in fact accurate.