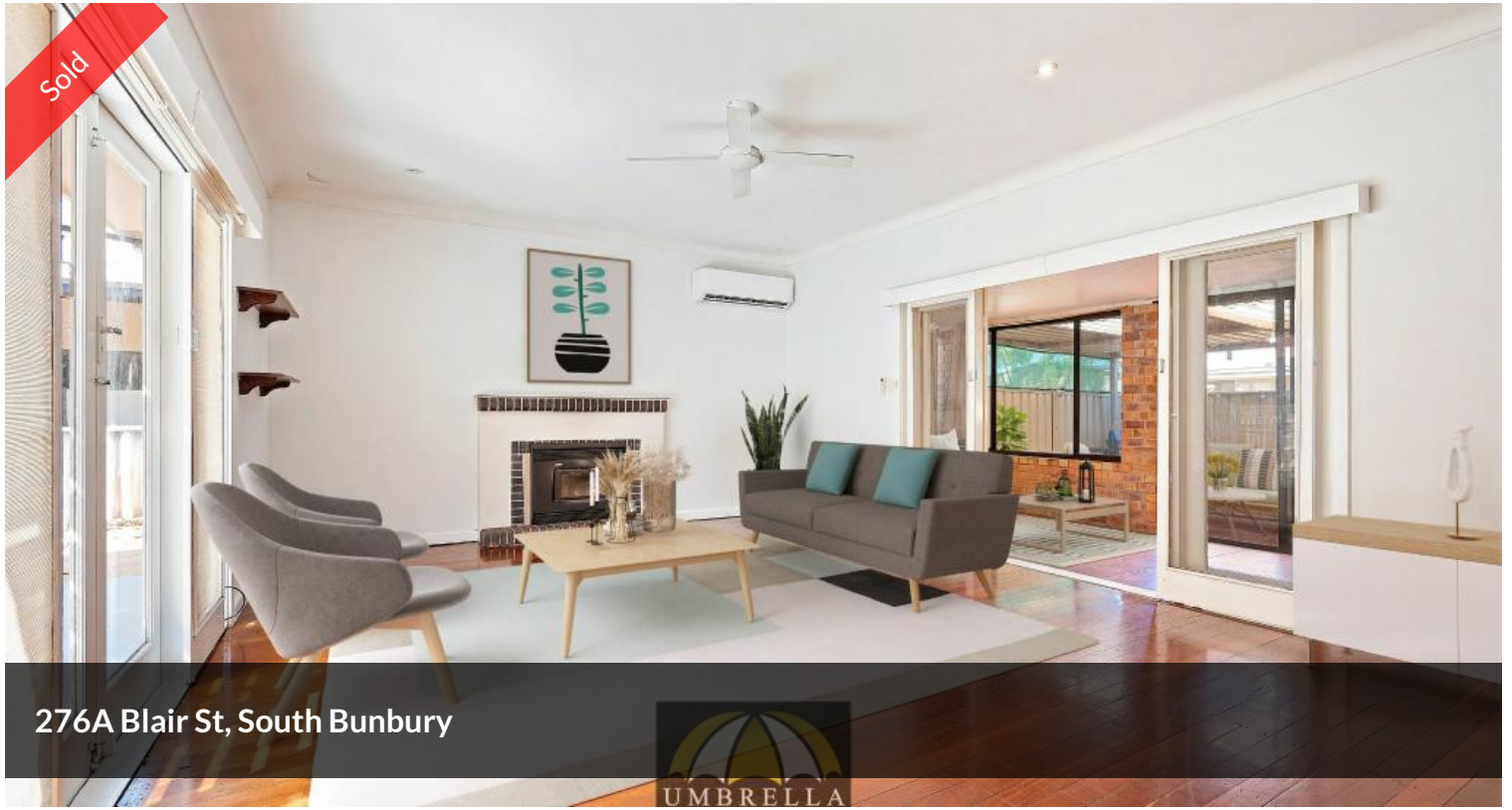


Sold



276A Blair St, South Bunbury



SOUTH BUNBURY GEM

UNDER OFFER OPEN HOUSE CANCELLED This classic 60's build offers convenient living at its best, this house is central to everything. Located just a short 4 minute drive to the beach, a 3 minute drive from The South West Sports Centre and South Bunbury Kmart. In addition located in the South Bunbury Primary Catchment Area.

Offering classic features such as high ceilings and wooden floorboards and large bedrooms, this home is sure to please. Classic Brick construction with rear patio area and front yard perfect for the kids to play.

The kitchen has a vintage feel to it and the bathroom is freshly painted and offers Terrazzo floors.

There is a split system located in the main living area and in addition there is a wood burning fireplace.

This home is waiting for you to add your own touches to it but, at the same time very quaint and nice the way that it is.

Come and visit today and fall in love.

 2  1  2  461 m²

Price	SOLD
Property Type	Residential
Property ID	931
Land Area	461 m ²

AGENT DETAILS

Celestine Pfuhl - 0435 824 123

OFFICE DETAILS

Umbrella Realty
1/98 Stirling Street East Bunbury
WA 6230 Australia
(08) 9779 9990



Contact Celestine for a viewing on 0435 824 123.

Umbrella Realty would like to state that no representation or warranties of any nature within this advertisement are given, intended, or implied. Any interested parties should rely on their own inquiries. Note that this listing has virtual furniture. Images of furniture are for illustration purposes only.

The above information provided has been furnished to us by the vendor/s. We have not verified whether or not that information is accurate and do not have any belief in one way or the other in its accuracy. We do not accept any responsibility to any person for its accuracy and do no more than pass it on. All interested parties should make and rely upon their own inquiries in order to determine whether or not this information is in fact accurate.